

THE 20th CENTURY NEW ORLEANS BICYCLE CLUB – A GENESIS

V. Frank Colangelo

When New Yorker, V. Frank Colangelo arrived to New Orleans in August of 1965 to attend Loyola University, a communications student, working at the school's campus WWL-AM radio and hearing of Frank's cycling background with the French Sporting Club in New York City and the Olympic Trials held there in 1964, became interested to broadcast an interview with him. While on the air, Frank described the intrepid differing maneuvers and training techniques of road, criterium and track racing; and at the close of the broadcast, he announced a desire to develop a Louisiana state cycling team to compete in the 1968 U.S. Olympic Trials and invited anyone interested to contact him.

Over the next couple of days, he visited bike retailers such as Gus Betat & Sons on Broad Street and Herwig's Schwinn Bicycle Store on Magazine Street demonstrating his Campy equipped, Columbus framed, Italian ATALA 10-speed racer to interest them in carrying similar stock. He knew that if competitive cycling were to start, there would be need for local "Pro" bike shops, just like in New York. Unfortunately, they would have nothing to do with stocking 10-speeds saying they would only special order from their catalogs if there was demand, despite his offering very reasonable commercial terms to supply them. It appeared that there was no interest in selling racing bikes, nor was there any other racing bike in the entire city. But then a few days later, the phone rang.

A native New Orleanian, Mr. Barrett Leibe, telephoned Frank wanting to join the broadcasted Olympic campaign call – he happened to catch it on the radio. That weekend he showed up for a bike ride with his CARLTON, a ten-speed, suffering from cattered steel cranks and a frame of second rate straight gauge steel, and he quickly realized when seeing the ATALA, a need to start a "Pro" cycling shop in New Orleans. Both his and Frank's view was that prospective bike customers could and would eventually become the nucleus of a future bike club. Barrett's unique establishment in 1967 of the "New Orleans Lightweight Cycles" on Milton Street, just between Gentilly & Elysian Fields, thrust forward competitive cycling in New Orleans, as it is known today. This was the first bike shop catering specifically to bike racing – European style! The store's featured pro-bike was the Reynolds framed, French PEUGEOT PX-10, and the touring bike was the PEUGEOT UO-8, both supplied from Franklin Imports in New York.

With the bike shop acting as a headquarters, the next two years were filled with numerous Sunday training rides which incorporated impromptu racing on Barataria Blvd to Lafitte, Audubon Park (open to traffic, then), Lakeshore Drive, the incomplete I-10 from the Twin Span to Michoud Blvd and even the New Braunfels Bicycle Race in Texas. There were seldom more than five cyclists for the rides and certainly no female riders. Though women's racing was well established in the Northeast and the Pacific, New Orleans hadn't yet "stepped up to the plate" in this respect. The 1968 Olympics came and went, and there was still no Louisiana team. By the winter of 1968, out of frustration, it was time to have some sanctioning of the all the hard work done to bring 10-speed cycling to New Orleans by a national regulatory body; so Frank decided to muster all up until then the New Orleans cycling legacy into some formal national recognition. In February of 1969, the New Orleans Bicycle Club was conceptually established. With it's first official

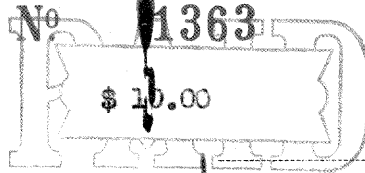
race called the “New Orleans 100”, a 62.5 mile event on the Lakefront on March 30, 1969, and the sanction by the Amateur Bicycle League of America (ABL), the predecessor of the USCF and now USA Cycling, gave official bona fide recognition to the present day New Orleans Bicycle Club on March 7, 1969. Frank, being the promoter, did not race in this inaugural race, but was the referee, a race-monitor position required by the ABL for the event. That year, he just turned 24 years old, and Barrett 26! Those were the years.

Upon completion of the university in June of 1969, he joined the USAF leaving the stewardship of the fledgling bike club to develop its own unique life and special character – and over the following years, it matured! Today, Frank still occasionally rides quietly with the NOBC on the Lakefront and races the Louisiana Senior Olympic Games. He smiles with deep satisfaction and joy as the NOBC riders zoom past him. Certainly, in hindsight the credit for the sustenance and evolution of the New Orleans Bicycle Club has goes to all the cyclists of New Orleans – it’s not a club when only one person is a member!

Amateur Bicycle League of America

GOVERNING BODY OF AMATEUR CYCLING IN THE UNITED STATES

Sanction No.



OFFICIAL



SANCTION

Organized 1920

Incorporated 1921

Date Issued

March 7, 1969

New Orleans Bicycle Club

Is hereby authorized to conduct

(promoter)
(Frank Colangelo)

New Orleans 100

(description of event)

Date March 30, 1969 City New Orleans State Louisiana Time 9:00 A.M.

All rules and regulations of the Amateur Bicycle League of America must be complied with and ENFORCED.

PROGRAMS AND ENTRY BLANKS must contain the following notice: "Held under the sanction of Amateur Bicycle League of America, Inc."

Prizes as advertised on entry blank and program must be awarded winners.

A.B.L. of A. reserves the right to withdraw sanction at any time prior to meet for any cause, which in its judgment requires such action.

In granting this sanction, it is understood that the A.B.L. of A., Inc., shall be free from any liabilities or claims whatsoever, and not responsible for damages arising by reason of injuries to anyone during the conduct of the meet.

AT THE CONCLUSION OF THE MEET, REPORT SHOULD BE MAILED TO CHAIRMAN, BOARD OF CONTROL, ACCOMPANIED BY A COPY OF ENTRY BLANK, PROGRAM AND NEWSPAPER CLIPPINGS. THIS IS NECESSARY IN ORDER TO MAINTAIN PROPER GOVERNMENT OF THE SPORT.

Promoters are particularly requested to enforce rule requiring that Registration Number of each competitor appear on all Entry Blanks when filed.

Promoter cannot refuse entry to any amateur in good standing with the A.B.L. of A.

Racing rules require that all competitors wear Helmets for head protection. Further, open ends of handlebar or extension must be plugged to close openings.

Officials for Events

Referee Frank Colangelo

Judges Jan Samuels

Karl Wotter
Chairman, Board of Control

Charles B. Jones

hardiering
he can iron
inks under
d pro, Jack
y teachers
is another
blem.

explain this
ne popular,
Masters
I'm in the
as happened
can bet I'll

to blame his
ast year to
that sur-
tory in the
came after
zo of Argen-
n erroneous

said Goalby.
★

the won the
last round 66
be blamed for
mistake, which
ne a tie, Goal-
wood by fans
the victim of

," said Goal-

de about \$250,-
of the Masters
didn't make a

Coach

TON, Ind. (AP)
California was
track coach at
ersity yesterday.

Baltimore pushed two runs
across in the ninth inning to
beat the Yankees with Don
Buford singling the tie-breaker
across and then scoring an in-
surance run.



TOP CYCLISTS COMPETE ON LAKEFRONT 62½-Mile Race Slated

Some of the nation's
leading cyclists will take
part in a rugged 62½-
mile bike race on Lake-
shore Drive.

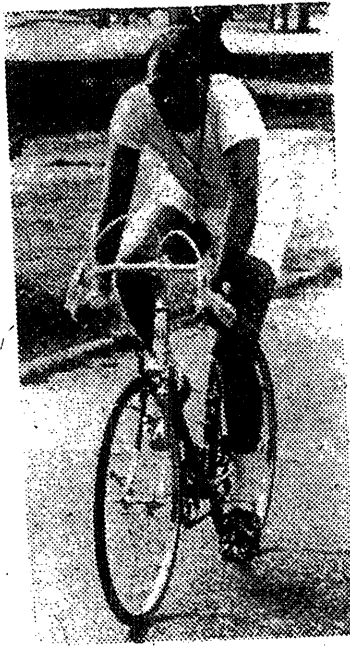
Scheduled to begin at
9 a.m. and last until
noon, the stamina - test-
ing event is being spon-
sored by the New Or-
leans Bicycle Club.

The field of 30 will include
current state champion Jim
Ohman and former state king-
pin Barrett Leibe, both of
New Orleans.

THE CYCLISTS will trav-
erse a five-mile course—from
Lakeshore dr. to West End
and back—six times. Police
will block the course to mo-
torists during the race.

"It's the biggest bike race
we've had down here since
the organization was formed,"
says Leibe. "We'll have per-
formers from New York, Illi-
nois and California.

"As most bike races are, it
will be a severe test of en-
durance. It will be contested
over a rolling, curvy course



BARRETT LEIBE
... in Sunday race ...

of concrete with one overpass
—something that should be
quite interesting."

The New Orleans Bicycle
Club is sponsoring the race
with the sanction of the Amer-
ican Bicycle League of Amer-
ica.

Kathy Whitworth Leads by Four

PORT MALABAR, Fla.
(AP)—Kathy Whitworth bolt-
ed to a four-stroke lead yes-
terday with a 37-31-68 in the
first round of the \$17,500 Port
Malabar Invitational Golf
Tournament

Miss Whitworth, leading
money winner for four consec-
utive years on the Ladies
Professional Golf Association
tour, pushed four strokes
ahead of Sandra Spuzich, tied
for second at 72.

Veteran Patty Berg was in-
volved in a four-way tie for
third at 73.

home Bobby Hrapmann in the
fifth frame.

McDonogh's fired-up Tro-
jans upped their district mark
to 5-1 as Bernard controlled
the entire game from his rise
in the center of the diamond.
The lanky pitcher set down a
dozen Bucs.

CHUCK CROSBY watched
his wayward 3-2 pitch with the
bases loaded force home
Terry Duffy with the decid-
ing tally in the very first
inning.

Strong-armed Allen Rome
hurled a two-hitter at the de-
fending champion Owls. While
striking out eight Birds, he
also left seven stranded.

Woody Eppinette, Mr. Re-
liable for Chalmette in the
past, had 10 Easton batters
stranded off five hits. Eddie
Vittrano's two-run single in
the seventh, brought the upset
about.

ball franch

Snyder,
gaining a l
pansion fra
treat Expc
cent profe
meetings
Calif.

"Our ch
football fr
better than
ting basel
stage," Sr
one I spol
terested in

DRAG RACES
LAPLACE DRAGWAY
SUNDAY MARCH 30th
Dual Match Race of Champions
Big Daddy Don Garlito (Nat. Champ)
Bennie Osborn (world Champ)
T.V. Tommy Ivo
Ron Rivero
(Dave Chenevert back up car)
(Local Champ)



Call A
Hay,
deper
furnis

STATES-ITEM, Mar 29, 1969



N. O. CYCLIST—Barrett Leibe, New Orleans bicyclist, is shown here adjusting his racer. The local, a past state road racing champion, will be competing in the National Championships in Detroit and the Aspen Alpine Race (300 miles in the mountains) among other events around the country.

N.O. Bicycle Club Slates First Race

Lakeshore Drive Will Be Course

The New Orleans Bicycle Club will hold its first race of the season Sunday on Lakeshore Drive beginning at 9 a.m. Thirty-five riders from several states are entered in the race.

The race will be over a 10-mile course, with six laps to be run, making a total of 62 gruelling miles. The police department will block off the en-

tire course.

The marathon will begin near the Coast Guard lighthouse and continue to the Seabrook Bridge turnaround and back. It will take approximately three hours to complete.

Trophies will be awarded to the first, second, third, and fourth place finishers.

Golf Results

METAIRIE COUNTRY CLUB

Ladies Day—Event low net: Class A, low net, Mrs. R. Umbach 74, second Mrs. R. Hebert 74, low gross Mrs. B. Clements 90.

Class B, low net, Mrs. D. McCrea 76, second Mrs. E. Huppenbauer 78, low gross, Mrs. D. Richardson 103.

Class C, low net tie: Mrs. T. Melius 74, Mrs. C. Cobb 74. Mrs. Cobb won draw.

Low gross, Mrs. J. Rusch, 114.

COLONIAL

Ladies' Day, Event: Best Nine, 1/2 handicap. Class A, tie, Mrs. E. Stoulig, 45-10-35, and Mrs. R. Heepke, 47-12-35. Low net, Mrs. E. Stoulig, 44-21-73, and Mrs. R. Heepke, 46-23-73. Low gross: Mrs. L. Horn, 93.



M. J. Knobloch, Jr.

New LSUNO Facility

Two Basketball Courts Are in Arena

LSUNO's new Health and Physical Education Center was formally opened this month as more than 2,000 packed the gymnasium to see a performance of the Danish Gymnastics Team as an initial offering in the building.

The Center will hold some 3,000 spectators for basketball and other sports events when the remaining seats are installed in the weeks ahead. But for all practical purposes, LSUNO now has for the first time a modern facility for its health and physical education program intramurals and intercollegiate athletics.

The building cost \$1.3 million and has two regulation-sized basketball courts.

Dr. Vane T. Wilson, chairman of the H&PE department, said his program is now servicing the more than 1,000 students in the college of education who must take between five and nine semester hours of H&PE courses during their college career. A physical education major will be inaugurated in September.

"We are particularly interested in letting the general public and the university community know that LSUNO's H&PE curriculum is a strong one academically," Dr. Wilson said. "Our student majors will complete all the humanities, social sciences and science requirements that all other students complete."

Dr. Wilson, who is a generalist in the field of H&PE, added the program will stress body movement through which students can develop skills that they can use in recreational activities for the rest of their lives.

"We also plan, as time goes on, to offer more public performances like that of the Danish gymnasts," Dr. Wilson said.

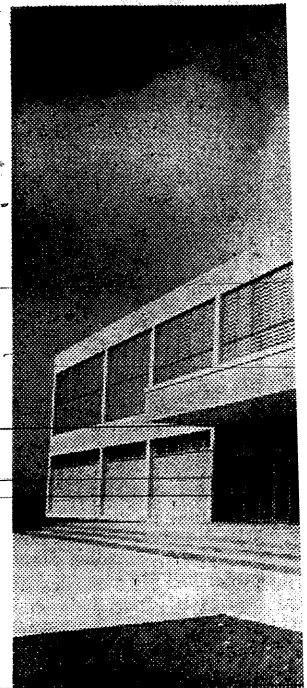
Head Basketball Coach Ron Greene said he was genuinely happy that LSUNO finally has an arena in which to play its intercollegiate games. The university's junior varsity was forced to schedule its home games at local high school gyms this year.

"I felt this facility will do more for the growth of LSUNO than any other single buildings," Greene said. "The events given here will attract people who

Jensen Status Still Serious

RENO, Nev. (AP) — Jackie Jensen, the American Baseball League's most valuable player in 1968, was hospitalized in

LSUNO Gym



READY FOR EVENTS — LSUNO Health and Physical Education building capacity 3,000, was recently opened. For the first time it

otherwise might never set foot on the campus."

LSUNO will field a varsity cage team next season in the NCAA College Division.

The new facility also includes five H&PE classrooms and one of the finest gymnastics rooms in the South. Gymnastics Coach Loyd Huval has been most in-

m.

Whitew

